

UNIVERSITY OF SASKATCHEWAN CPTED on Campus | October 2015 - U of S Protective Services

CPTED on Campus

History of CPTED at USask
The 1990s and our tree-trimming success.

Physical Security with CPTED
After Sept. 11th, CPTED was a tough sell – Physical Security was the focus.

Refreshing the Community Focus
Community Resources Section Created

Building Community from the Inside Out
The Safe Campus Initiative

www.usask.ca/protectiveservices


1

UNIVERSITY OF SASKATCHEWAN CPTED on Campus | October 2015 - U of S Protective Services

The Campus Environment

Post Secondary Institutions

Our goal is to influence the university to consider CPTED; budget usually trumps design.



www.usask.ca/protectiveservices

2

UNIVERSITY OF SASKATCHEWAN CPTED on Campus | October 2015 - U of S Protective Services

The Campus Environment

Post Secondary Institutions

The university has seen new projects.

Facilities Department has created policy which requires our participation and recommendations.



www.usask.ca/protectiveservices

3

UNIVERSITY OF SASKATCHEWAN CPTED on Campus | October 2015 - U of S Protective Services

The Campus Environment

Post Secondary Institutions

Placed ourselves on every campus Local Safety Committee.

Although many issues are not crime related, often our advice or expertise can assist in helping solve safety related problems.



www.usask.ca/protectiveservices


4

UNIVERSITY OF SASKATCHEWAN CPTED on Campus | October 2015 - U of S Protective Services

Thinking Outside the Box

Perception is Key

How Safe Do You Feel Walking the Exterior of Biology at Night?



Perception Level	Count
Very Safe	5
Somewhat Safe	18
Somewhat Unsafe	14
Very Unsafe	1

Measure perception first, and compare results to actual crime rates. When results are at odds, perhaps the solution is aesthetic.


www.usask.ca/protectiveservices

5

UNIVERSITY OF SASKATCHEWAN CPTED on Campus | October 2015 - U of S Protective Services

Thinking Outside the Box

Perception is Key



6

Thinking Outside the Box

Perception is Key



7

Thinking Outside the Box

Use of Space

Creative use of space has been successful in colleges that have adopted the approach.



www.usask.ca/protectiveservices

8

When Crime is the Problem

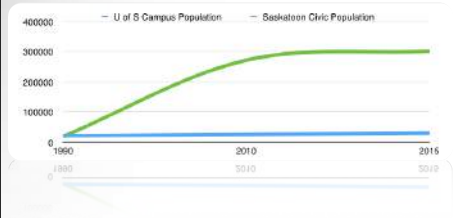
Growing City

www.usask.ca/protectiveservices

9-1

When Crime is the Problem

Growing City

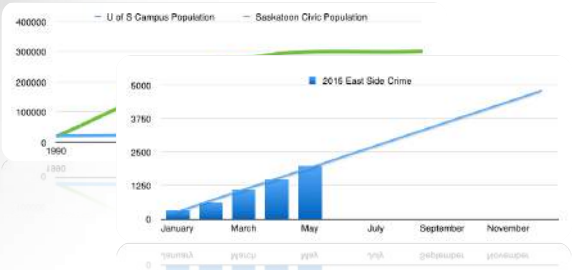


www.usask.ca/protectiveservices

9-2

When Crime is the Problem

Growing City

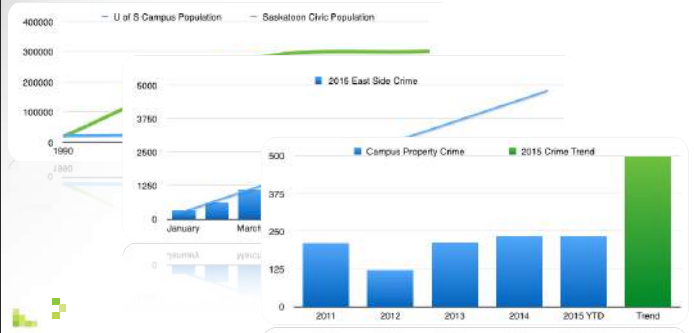


www.usask.ca/protectiveservices

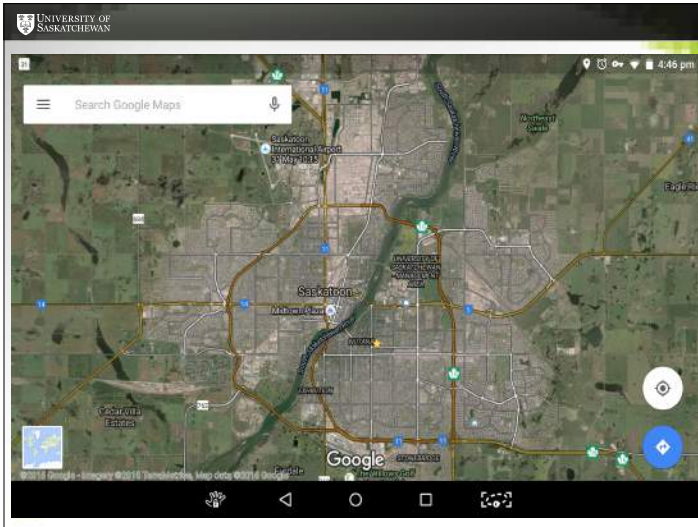
9-3

When Crime is the Problem

Growing City



9-4



10





11

UNIVERSITY OF SASKATCHEWAN CPTED on Campus | October 2015 - U of S Protective Services

Pulling for Prosocial Behaviour

Safe Campus Initiative

Modelling: In Psychology is the process by which a person can serve as a model for others.

Bryan & Test, 1966

www.usask.ca/protectiveservices

12

UNIVERSITY OF SASKATCHEWAN CPTED on Campus | October 2015 - U of S Protective Services

Pulling for Prosocial Behaviour

Altruism vs Egoism

How many times have you given blood in your lifetime?
 Novice 0-3 or Expert 3+
 Why do you donate blood?

<p>Service to Community To Help Humanity Sense of Duty</p>	<p>It Makes Me Feel Good To Help a Friend or Relative Persuaded by Others</p>
--	---




www.usask.ca/protectiveservices

13

UNIVERSITY OF SASKATCHEWAN CPTED on Campus | October 2015 - U of S Protective Services

Huskie Pride

Safe Campus Initiative

14

UNIVERSITY OF SASKATCHEWAN CPTED on Campus | October 2015 - U of S Protective Services

Planning 390

Supporting Academia

- Research and Field Methods in Planning:
 - Received reports from students after a significant incident occurred on campus.
 - Reports were well written, but lacked empirical data that our office could have supplied.
- In early 2016 we hope to work with the PLANN 390 class as data collectors, researchers and subjects so as to better identify student needs and concerns.

www.usask.ca/protectiveservices

15

Thank you.

